



www.greengrid.co.uk

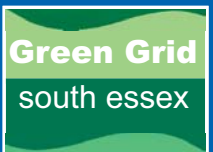
For more information contact:

Thames Gateway South Essex Partnership
3rd Floor South
Acorn House
Great Oaks
Basildon
Essex, SS14 1AH

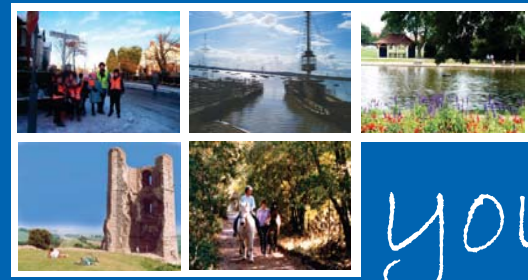
Tel: 01268 595345
www.tgessex.co.uk

Thames Chase Community Forest
Catherine Bailey (Green Spaces Strategy Officer)
Broadfields Farm
Pike Lane
Cranham
Upminster
Essex, RM14 3NS

Tel: 01708 641880
www.thameschase.org.uk



your place, your space...



*your place,
your space...*







GREEN GRID

WHAT is Green Grid?

This is a long-term project to develop a network of open spaces and green links throughout Thames Gateway South Essex. The Thames Gateway designation provides an exciting opportunity for regeneration in this area, and a desire for change. A radically enhanced image for South Essex, a fresh perception and environmental improvement are essential to this process of change. Our aim is to:

- embrace diversity of wildlife habitats and landscapes in town and countryside
- connect new communities with existing neighbourhoods, the regenerated riverside, local attractions and the countryside, providing improved "access to all"
- conserve and enhance existing green space and links
- create high quality new green space and links in areas of opportunity and need
- contribute to flood management, improved air and water quality and noise abatement
- create a sense of place through enhancement of landscape character and heritage
- enhance the image and confidence in South Essex as a quality place to live, work and invest
- engage all communities in the planning, management and celebration of the network
- plan and promote the network as part of a sustainable transport system
- promote the network for recreation and tourism, education and healthy living 

WHERE is the Green Grid?

Green Grid is being developed within the Thames Gateway South Essex area, an area of over 400 sq km broadly to the south of the A127 and the A13. Nearly 600,000 people live in South Essex but it is home to important areas of wildlife and open space too. 



WHO are we?

We are a partnership project that includes the five local authorities of South Essex, the County Council and many government agencies and local environmental organisations. Specifically, a new Green Grid partnership is being set up, that currently includes:

- East of England Development Agency
- Thames Gateway South Essex Partnership
- Forestry Commission
- Countryside Agency
- Basildon, Castle Point, Rochford, Southend and Thurrock Councils and Essex County Council
- Thames Chase Community Forest
- Environment Agency
- SUSTRANS – the sustainable transport charity
- RSPB
- Essex Wildlife Trust
- Thames Estuary Partnership
- Groundwork UK
- English Nature
- English Heritage

These organisations are working together to bring knowledge and resources to develop a strategy for Green Grid and start improvements to the greenspace network. 

GREEN GRID is happening now...

Green Grid South Essex has been successful in attracting £5m of government funding for the next three years to develop projects on the ground. These include the creation of greenways – for cyclists, pedestrians, horse-riders and the disabled – across the area; big improvements to marshland areas on the border with London and south of Basildon; improving access and landscape to military and industrial sites along the riverside and improvement projects at country parks. This is just the start of a regeneration process that will last 20-30 years costing many millions of pounds. 